



# **Social Studies 11**

Examination Booklet  
2007/08

## **Release Exam**

**DO NOT OPEN ANY EXAMINATION MATERIALS UNTIL INSTRUCTED TO DO SO.**  
**FOR FURTHER INSTRUCTIONS REFER TO THE RESPONSE BOOKLET.**



## PART A: SELECTED RESPONSE

Value: 70%

Suggested Time: 50 minutes

**INSTRUCTIONS:** For each question, select the **best** answer and record your choice on the **Response Booklet** provided. Using an HB pencil, completely fill in the bubble that has the letter corresponding to your answer.

You have **Examination Booklet Form A**. In the box above #1 on your **Response Booklet**, fill in the bubble as follows.

Exam Booklet Form/ Cahier d'examen	A	B	C	D	E	F	G	H
	<input checked="" type="radio"/>	<input type="radio"/>	<input type="radio"/>	<input type="radio"/>	<input type="radio"/>	<input type="radio"/>	<input type="radio"/>	<input type="radio"/>

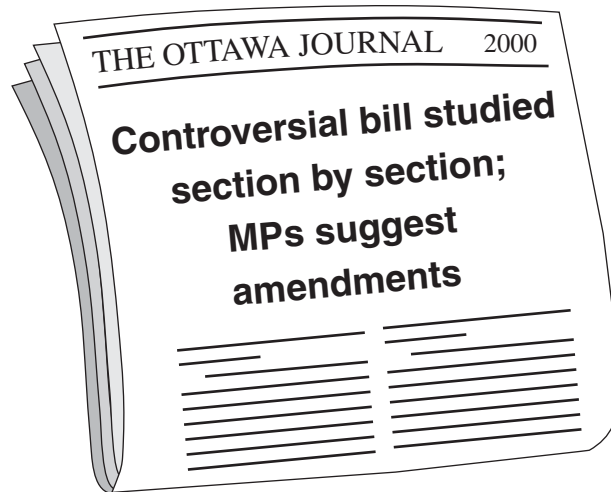
1. Which Canadian political party has been historically supportive of labour unions?
- A. Green Party
  - B. Liberal Party
  - C. Conservative Party
  - D. New Democratic Party

**Use the following list to answer question 2.**

- strong military
- private ownership of property allowed
- priority of the state over individual rights

2. What political ideology is associated with this list?
- A. fascism
  - B. socialism
  - C. communism
  - D. conservatism

Use the following newspaper headline to answer question 3.



3. With which step of the law making process is this headline associated?

- A. First Reading
  - B. Second Reading
  - C. Committee Stage
  - D. Third Reading
- 

4. What is the role of a lobbyist?

- A. to introduce a bill to the Speaker
- B. to influence a government policy or program
- C. to participate in debates in the House of Commons
- D. to run as a candidate in a federal or provincial election

5. How do private members' bills differ from other bills?

- A. They originate only within opposition parties.
- B. They have a greater chance of passing into law.
- C. They allow backbenchers to introduce legislation.
- D. They permit non-elected Canadians to propose bills.

Use the following chart to answer question 6.

<b>Election Results – 2000</b>	
Liberal Party	172
Canadian Alliance Party	66
Bloc Québécois	38
New Democratic Party	13
Progressive Conservative Party	12
<b>Total Number of Seats in Parliament</b>	<b>301</b>

6. What type of government was formed as a result of this federal election?

- A. union
  - B. minority
  - C. majority
  - D. coalition
- 

7. What name is given to an electoral region in Canada?

- A. poll
- B. county
- C. territory
- D. constituency

**Use the following list to answer question 8.**

- |   |
|---|
| <ol style="list-style-type: none"><li>1. campaigning</li><li>2. tabulation</li><li>3. dissolution</li></ol> |
|---|

8. What is the correct order of the stages in the electoral process?

- A. 1, 2, 3
  - B. 1, 3, 2
  - C. 3, 1, 2
  - D. 3, 2, 1
- 

9. What is a key criteria used by a Prime Minister to select a Cabinet Minister?

- A. personal income
- B. length of residency
- C. size of constituency
- D. regional representation

10. Which section from the Canadian Charter of Rights and Freedoms would prevent a government agency from discriminating on the basis of gender?

- A. equality rights
- B. mobility rights
- C. democratic rights
- D. fundamental freedoms

11. Which two factors provide the basis for the amending formula of Canada's Constitution?

- A. population and number of provinces
- B. language and regional representation
- C. ethnic balance and religious diversity
- D. economic growth and residual powers

**Use the following quotation to answer question 12.**

You cannot hold a modern nation together by force. You have to hold it together by showing people that...their future, their destiny is better within this country than without.

Prime Minister Trudeau

12. Which of the following are associated with Trudeau's comments?
- A. the Constitution and Quebec
  - B. the amending formula and Newfoundland
  - C. equalization payments and Aboriginal people
  - D. the Canadian Charter of Rights and Freedoms and immigrants

**Use the following quotation to answer question 13.**

A new fighting vehicle was needed...one that could breach the line of enemy trenches.

Officer, Royal Newfoundland Regiment

13. In which battle was this vehicle first used?
- A. Ypres
  - B. Somme
  - C. Vimy Ridge
  - D. Passchendaele
- 

14. Which is a statement of **opinion** rather than **fact** about trench warfare during World War One?
- A. Rats caused problems for the soldiers in the trenches.
  - B. It was dangerous to climb out of the trenches at night.
  - C. Trench life was the worst of the soldiers' experiences.
  - D. "No Man's Land" was the area between the opposing trenches.

15. What was a direct result of profiteering at the start of World War One?
- A. Victory Bonds were sold.
  - B. Workers' wages increased.
  - C. Rationing coupons were issued.
  - D. Military supplies were of poor quality.
16. What was a concern of the federal government during the Winnipeg General Strike?
- A. Acts of terrorism were occurring on Canadian soil.
  - B. Strike leaders were promoting communist ideology.
  - C. The strike would discourage American investment in Canada.
  - D. The strike would have a negative impact on Canada's grain production.
17. Which quotation accurately reflects Prime Minister King's view of autonomy in the interwar period?
- A. "Social welfare is the sole responsibility of the provinces."
  - B. "Not necessarily conscription, but conscription if necessary."
  - C. "A vote for the Liberal Party is a vote for economic recovery."
  - D. "The Canadian Parliament will decide if troops will be sent abroad."
18. What is the significance of the Halibut Treaty?
- A. It created free trade with the United States.
  - B. It protected endangered fish migration routes.
  - C. It strengthened the relationship between Canada and Great Britain.
  - D. It was Canada's first independently negotiated international agreement.
19. What did the Persons Case allow women to become?
- A. voters
  - B. Senators
  - C. factory workers
  - D. Supreme Court judges



Use the following graph to answer question 20.



20. Which of the following reflects the **unemployment** trend shown in the chart?

- A. recovery → prosperity → depression → recovery
- B. recession → depression → recovery → prosperity
- C. recovery → recession → depression → prosperity
- D. prosperity → recession → depression → recovery

---

21. Which of the following was a cause of the Great Depression in Canada?

- A. lower tariffs for exported goods
- B. heavy reliance on few industries
- C. diversification of export markets
- D. reduced imports from the United States

22. Which statement reflects the views of both R.B. Bennett and Mackenzie King at the start of the Great Depression?
- A. Unemployed men should be put in jail.
  - B. The federal government should provide aid to the unemployed.
  - C. Protest parties should be included in government policy making.
  - D. The Great Depression should be considered as only a temporary dilemma.
23. What was the significance of the Regina Manifesto?
- A. It created a national system of relief.
  - B. It strengthened western Canada's movement toward separation.
  - C. It outlined the platform of the first major socialist party in Canada.
  - D. It suggested that municipal governments could solve Canada's economic problems.
24. What was the government's immediate response to the protesters involved in the On-to-Ottawa Trek?
- A. It ordered the deportation of many protestors.
  - B. It refused to yield to any of the protesters' demands.
  - C. It granted more money to set up additional relief camps.
  - D. It agreed to set up a task force to investigate relief camp conditions.
25. Which of the following encouraged traditional French Canadian culture in Quebec under the Union Nationale?
- A. labour unions
  - B. Communist Party
  - C. federal government
  - D. Roman Catholic Church
26. Which statement describes Canada's role in the Battle of Hong Kong?
- A. Canadian troops fought a significant naval battle.
  - B. Canadian troops conducted an amphibious assault.
  - C. Canadian troops had a decisive victory in the battle.
  - D. Canadian troops fought alongside Commonwealth troops in the campaign.

27. What was a purpose of the British Commonwealth Air Training Program?
- A. to assist the United States Air Force in the South Pacific
  - B. to stop enemy aliens planning an overthrow of the Canadian government
  - C. to reduce fatalities overseas while maintaining Canada's commitment to the war effort
  - D. to demonstrate Canada's air superiority while defending against enemy attack at home

Use the following map to answer question 28.



28. What does **X** on the map represent?
- A. the location of a failed invasion attempt
  - B. a country liberated by Canadian soldiers
  - C. an area extensively bombed by the Allies
  - D. the first battle involving Canadian soldiers

29. What is the purpose of the United Nations Security Council?
- A. to offer disaster relief to all regions of the world
  - B. to maintain peace and safety throughout the world
  - C. to provide interest-free loans to countries that have been affected by war
  - D. to ensure the health and well-being of countries during the outbreak of disease
30. What resulted from the creation of NATO?
- A. the creation of the United Nations
  - B. the establishment of the Warsaw Pact
  - C. a decrease in global military spending
  - D. a reduction of tension during the Cold War
31. Which of the following reflects Canada's attempt to establish independence from the United States during the post-war period?
- A. establishing NORAD
  - B. joining the United Nations
  - C. becoming a member of NATO
  - D. creating the Massey Commission
32. What was Canada's solution to the Suez Crisis?
- A. It suggested sending foreign aid to preserve the peace.
  - B. It proposed the creation of an international peacekeeping force.
  - C. It encouraged the combatants to take their disagreements to the United Nations.
  - D. It recommended that international sanctions be placed on the countries involved.
33. What is the purpose of Canada's welfare state?
- A. to provide social services for citizens
  - B. to protect the culture of immigrant groups
  - C. to provide legal counsel for the unemployed
  - D. to ensure services are available in both official languages

34. What is the purpose of the Canada Council for the Arts?
- A. to fund cultural organizations in Canada
  - B. to attract international artists to perform in Canada
  - C. to promote Canadian radio and television programs
  - D. to regulate performances of Canadian artists and musicians
35. Which of the following describes the change to Canada's immigration policy in the 1960s?
- A. It refused entry to refugees.
  - B. It gave priority to American immigrants.
  - C. It increased access for visible minorities.
  - D. It discouraged French-speaking immigrants.
36. To which conflict did Canada refuse to send its military forces?
- A. Gulf War
  - B. Yugoslavia
  - C. Korean War
  - D. Vietnam War
37. What did the White Paper, 1969 propose?
- A. to abolish the Indian Act
  - B. to give the vote to Aboriginals
  - C. to settle outstanding land claims
  - D. to unify Aboriginal organizations
38. What was the Canadian government's response to the actions of the FLQ?
- A. It invoked the War Measures Act.
  - B. It offered sovereignty-association to Quebec.
  - C. It created the Canadian Charter of Rights and Freedoms.
  - D. It suggested a referendum within Quebec on the issue of separation.

**Use the following events to answer question 39.**

- |  |
|--|
| <ol style="list-style-type: none"><li>1. Bill 101</li><li>2. Official Languages Act</li><li>3. Bilingualism and Biculturalism Commission</li></ol> |
|--|

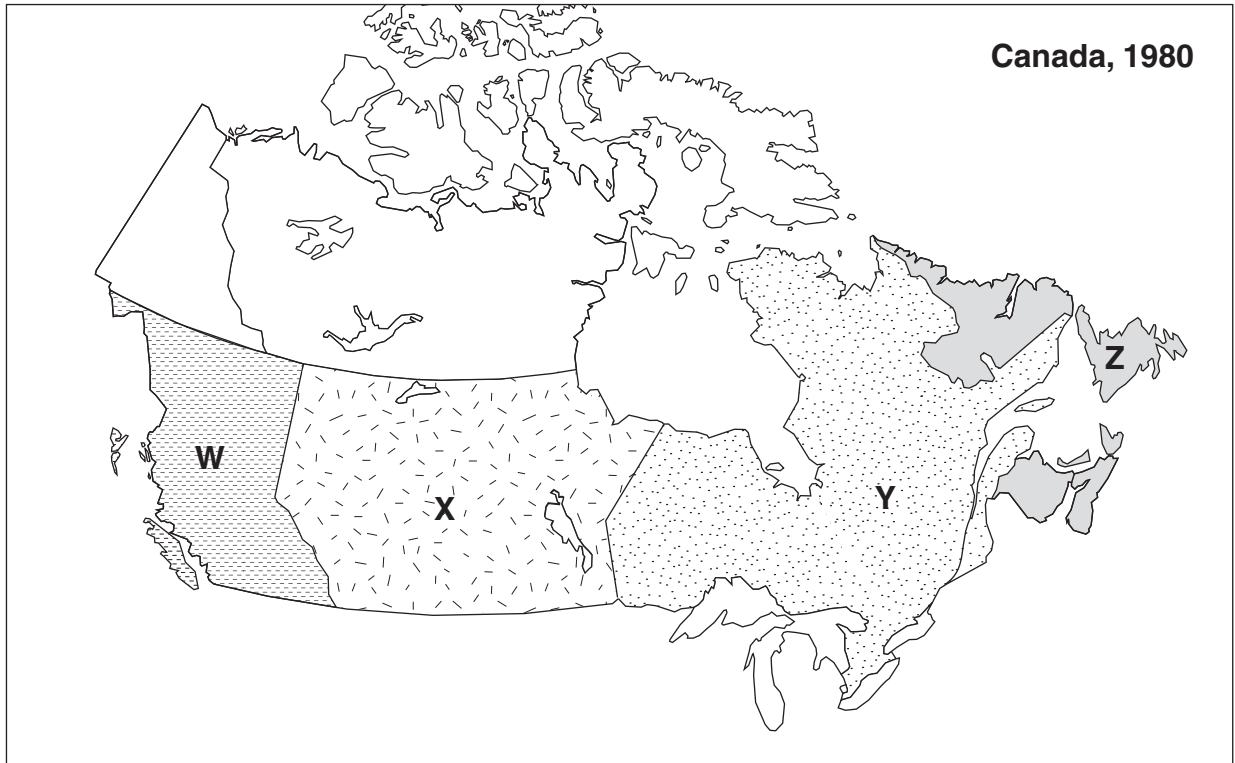
39. What is the correct chronological order of these events?

- A. 1, 2, 3
  - B. 1, 3, 2
  - C. 3, 1, 2
  - D. 3, 2, 1
- 

40. Which of the following gave rise to the Bloc Québécois?

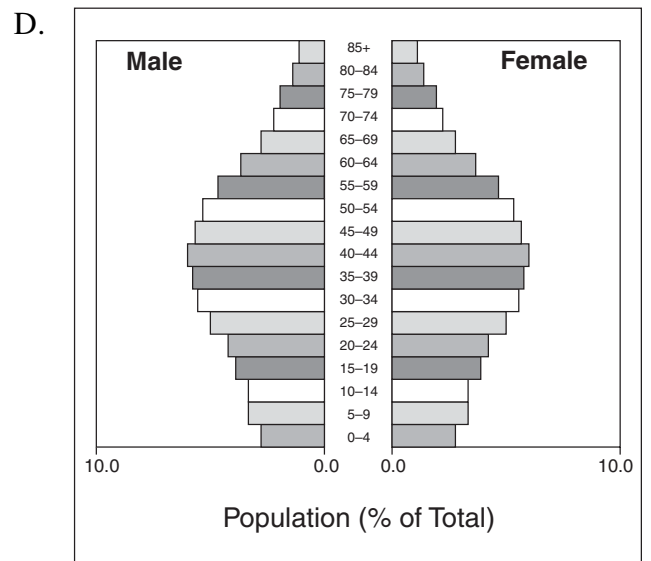
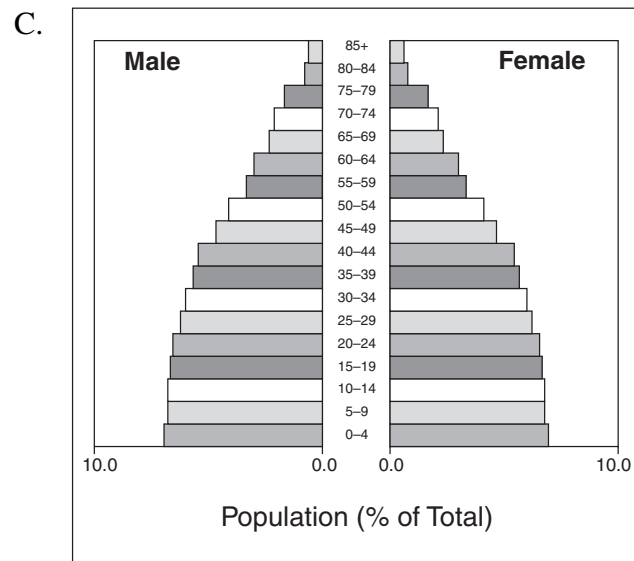
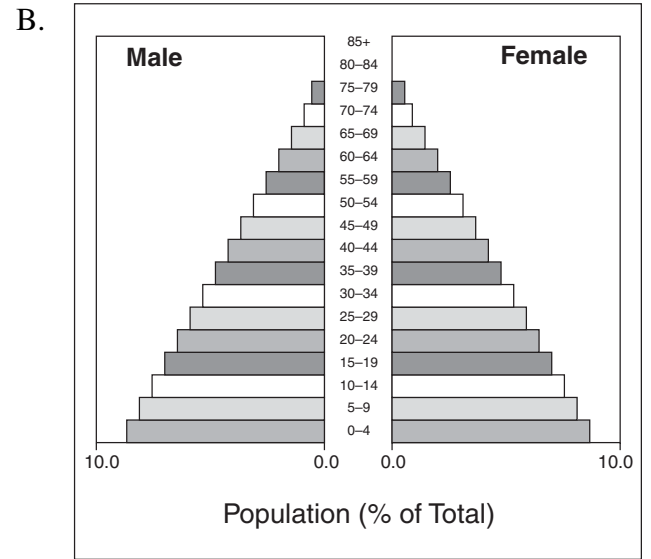
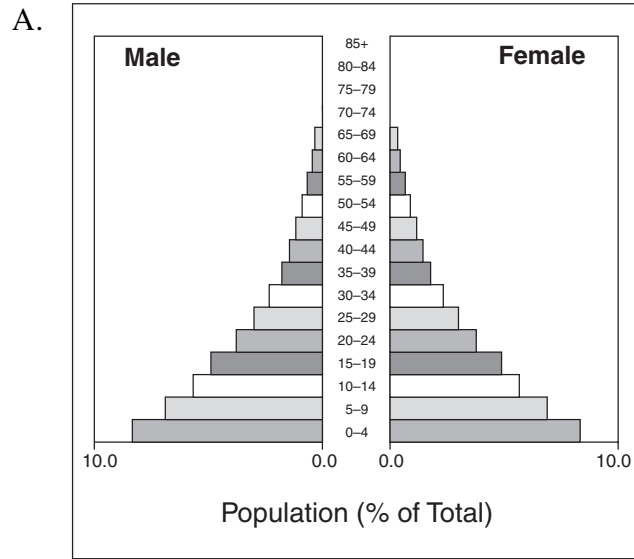
- A. the passage of Bill 101
- B. the federal policy of bilingualism
- C. the failure of the Quiet Revolution
- D. the collapse of the Meech Lake Accord

Use the following map to answer question 41.



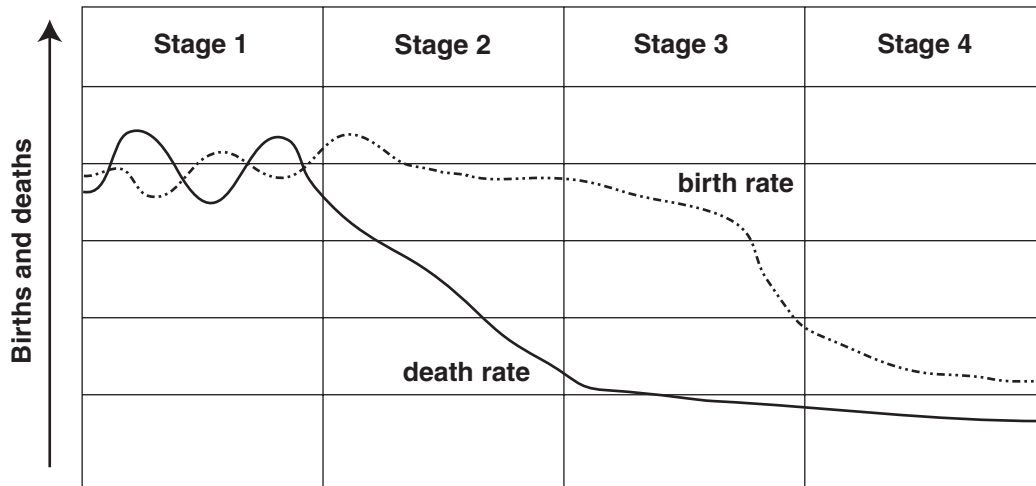
41. In which region did widespread anger occur over the National Energy Program?
- A. W
  - B. X
  - C. Y
  - D. Z
- 
42. What contribution did Pierre Trudeau make towards Canadian autonomy?
- A. the introduction of a new flag
  - B. the patriation of the Constitution
  - C. the signing of the Free Trade Agreement
  - D. the implementation of equalization payments
43. Which Aboriginal group was first to sign a self-government treaty with the federal government?
- A. Inuit
  - B. Dene
  - C. Nisga'a
  - D. Mohawk

44. What population pyramid shows the highest dependency ratio?





Use the following Demographic Transition Model to answer question 45.



45. Which of the following factors is typical at **Stage 3** of the Demographic Transition Model?

- A. falling immigration
  - B. lowering literacy rates
  - C. rising standard of living
  - D. increasing HIV/AIDS infections
- 

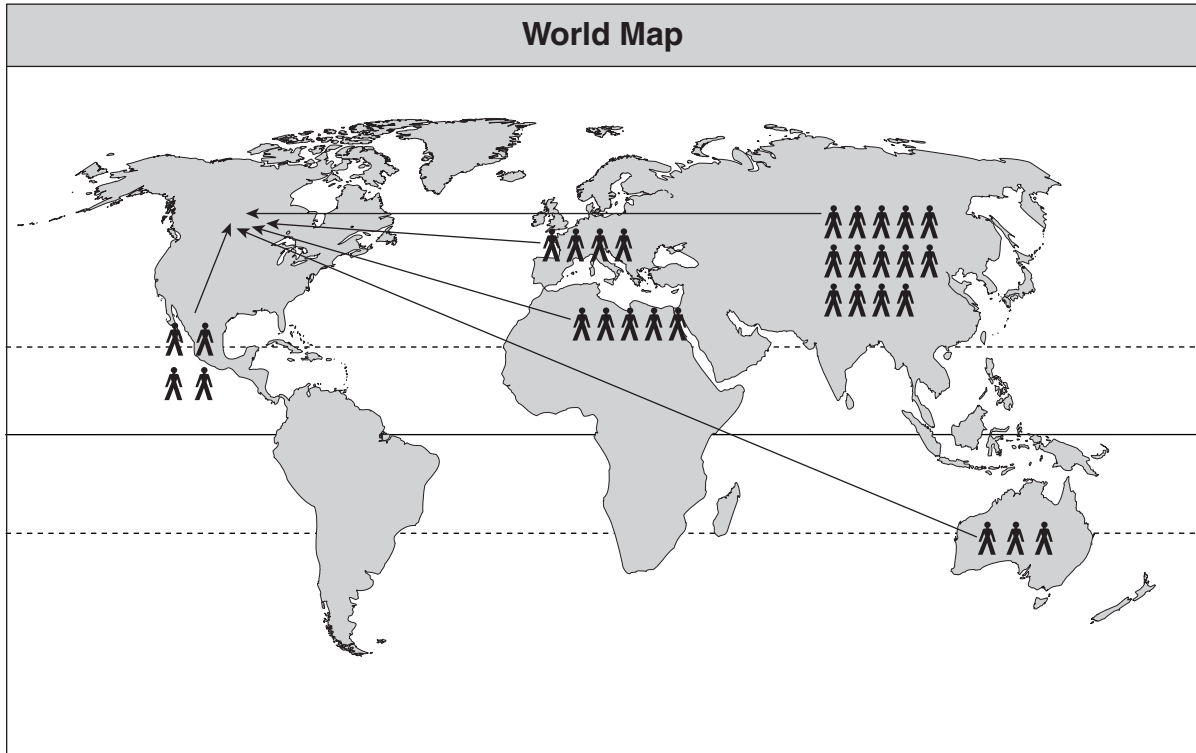
46. What is a determining factor in population distribution?

- A. literacy rate
- B. fertility rate
- C. doubling time
- D. physical geography

47. Which statement accurately describes Canada's population?

- A. It is aging.
- B. It is decreasing.
- C. Its fertility rate is increasing.
- D. Its overall population is younger.

Use the following map to answer question 48.



48. From Canada's perspective, which term describes the movement illustrated by this map?

- A. emigration
- B. immigration
- C. net migration
- D. population density

---

49. Which pair of factors would contribute to a **declining** rank in the UN Human Development Index?

- A. poor healthcare and increasing GDP
- B. decreasing civil war and increasing income
- C. poor education and increasing infant mortality rate
- D. decreasing crime rate and increasing life expectancy

**Use the following statement to answer question 50.**

In the developing world, it is the number one contributor to deaths of children under the age of five.

50. To what does the statement refer?

- A. cholera
  - B. civil war
  - C. HIV/AIDS
  - D. malnutrition
- 

51. What plays an important role in improving the standard of living for developing countries?

- A. reduced reliance on exports
- B. rising population growth rates
- C. increasing production of cash crops
- D. higher levels of education for women

**Use the following statement to answer question 52.**

Canadian companies provide resources to Mozambique; in return, they require its government to purchase products from Canadian manufacturers.

52. What does this describe?

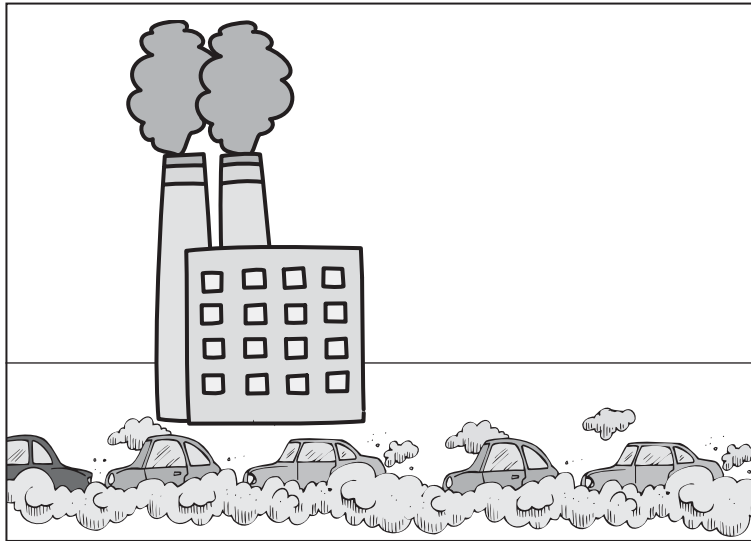
- A. tied aid
  - B. sustainability
  - C. debt reduction
  - D. multilateral aid
- 

53. Which is the greatest threat to the quality of Canada's freshwater supply?

- A. recreation use
- B. household pollution
- C. hydro-electric dams
- D. industrial contamination

54. Which of the following would reduce ozone layer depletion?
- A. testing vehicle emissions
  - B. banning the use of CFCs
  - C. eliminating acid precipitation
  - D. developing alternative energy sources

Use the following graphic to answer question 55.



55. What would result from the activities shown in this cartoon?
- A. rising sea levels
  - B. falling average temperatures
  - C. increasing rates of skin cancer
  - D. decreasing dependence on renewable energy

You have **Examination Booklet Form A**. In the box above #1 on your **Response Booklet**, ensure you filled in the bubble as follows.

Exam Booklet Form/ Cahier d'examen	A	B	C	D	E	F	G	H
	<input checked="" type="radio"/>	<input type="radio"/>	<input type="radio"/>	<input type="radio"/>	<input type="radio"/>	<input type="radio"/>	<input type="radio"/>	<input type="radio"/>

**This is the end of the selected-response section.  
Answer the remaining questions directly in the Response Booklet.**

**PART B: ESSAY**

**Value: 30%**

**Suggested Time: 70 minutes**

**INSTRUCTIONS:** Write your answers in **ink** in the space provided in the **Response Booklet**.  
No work written in this examination booklet will be marked.

- Your response should be in a **multi-paragraph format** including an introduction and a conclusion.

**1. Evaluate the impact of World War One on the Canadian home front.  
Use examples from between 1914–1918.**

**(15%)**

**Organization and Planning**

Use this space to plan your ideas before writing in the **Response Booklet**.

**WRITING ON THIS PAGE WILL NOT BE MARKED**

2. Explain the difficulties that developing nations experience as they try to break the poverty cycle. (15%)

**Organization and Planning**

Use this space to plan your ideas before writing in the **Response Booklet**.

**WRITING ON THIS PAGE WILL NOT BE MARKED**

**END OF EXAMINATION**

Place Personal Education Number (PEN) here.

Large rectangular box with arrows pointing inward from the left and right sides, intended for the Personal Education Number (PEN).

**Course Code = SS 11**  
**2007/08 RELEASE EXAM**

<b>Question 1</b>							
<b>0</b>	<b>1</b>	<b>2</b>	<b>3</b>	<b>4</b>	<b>5</b>	<b>6</b>	<b>NR</b>
<input type="checkbox"/>	<input type="checkbox"/>	<input type="checkbox"/>	<input type="checkbox"/>	<input type="checkbox"/>	<input type="checkbox"/>	<input type="checkbox"/>	<input type="checkbox"/>
<b>Question 2</b>							
<b>0</b>	<b>1</b>	<b>2</b>	<b>3</b>	<b>4</b>	<b>5</b>	<b>6</b>	<b>NR</b>
<input type="checkbox"/>	<input type="checkbox"/>	<input type="checkbox"/>	<input type="checkbox"/>	<input type="checkbox"/>	<input type="checkbox"/>	<input type="checkbox"/>	<input type="checkbox"/>

Exam Booklet Form/ Cahier d'examen    A   B   C   D   E   F   G   H  
                    

1  A  B  C  D  E  F

2  A  B  C  D  E  F

3  A  B  C  D  E  F

4  A  B  C  D  E  F

5  A  B  C  D  E  F

21  A  B  C  D  E  F

22  A  B  C  D  E  F

23  A  B  C  D  E  F

24  A  B  C  D  E  F

25  A  B  C  D  E  F

41  A  B  C  D  E  F

42  A  B  C  D  E  F

43  A  B  C  D  E  F

44  A  B  C  D  E  F

45  A  B  C  D  E  F

6  A  B  C  D  E  F

7  A  B  C  D  E  F

8  A  B  C  D  E  F

9  A  B  C  D  E  F

10  A  B  C  D  E  F

26  A  B  C  D  E  F

27  A  B  C  D  E  F

28  A  B  C  D  E  F

29  A  B  C  D  E  F

30  A  B  C  D  E  F

46  A  B  C  D  E  F

47  A  B  C  D  E  F

48  A  B  C  D  E  F

49  A  B  C  D  E  F

50  A  B  C  D  E  F

11  A  B  C  D  E  F

12  A  B  C  D  E  F

13  A  B  C  D  E  F

14  A  B  C  D  E  F

15  A  B  C  D  E  F

31  A  B  C  D  E  F

32  A  B  C  D  E  F

33  A  B  C  D  E  F

34  A  B  C  D  E  F

35  A  B  C  D  E  F

51  A  B  C  D  E  F

52  A  B  C  D  E  F

53  A  B  C  D  E  F

54  A  B  C  D  E  F

55  A  B  C  D  E  F

16  A  B  C  D  E  F

17  A  B  C  D  E  F

18  A  B  C  D  E  F

19  A  B  C  D  E  F

20  A  B  C  D  E  F

36  A  B  C  D  E  F

37  A  B  C  D  E  F

38  A  B  C  D  E  F

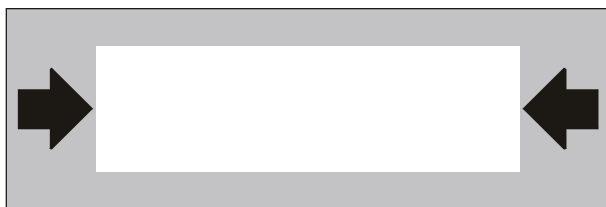
39  A  B  C  D  E  F

40  A  B  C  D  E  F

**Unfold front cover flap to respond to questions 41 to 55.**



Place Personal Education Number (PEN) here.



**Course Code = SS 11**

**Social Studies 11**

**2007/08 RELEASE EXAM**

**Response Booklet**

### **Student Instructions**

1. Place your Personal Education Number (PEN) label at the top of this Booklet **AND** fill in the bubble (Form A, B, C, D, E, F, G or H) that corresponds to the letter on your Examination Booklet.
2. Use a pencil to fill in bubbles when answering multiple-choice, matching and true-false questions on the front of this Booklet.
3. Use a blue- or black-ink pen when answering written-response questions in this Booklet.
4. Read the Examination Rules on the back of this Booklet.
5. Do not tear off the Answer Sheet.

















## Examination Rules

1. The time allotted for this examination is two hours.  
You may, however, take up to 60 minutes of additional time to finish.
2. Answers entered in the Examination Booklet will not be marked.
3. Cheating on an examination will result in a mark of zero. The Ministry of Education considers cheating to have occurred if students break any of the following rules:
  - Students must not be in possession of or have used any secure examination materials prior to the examination session.
  - Students must not communicate with other students during the examination.
  - Students must not give or receive assistance of any kind in answering an examination question during an examination, including allowing one's paper to be viewed by others or copying answers from another student's paper.
  - Students must not possess any book, paper or item that might assist in writing an examination, including a dictionary or piece of electronic equipment, that is not specifically authorized for the examination by ministry policy.
  - Students must not copy, plagiarize or present as one's own, work done by any other person.
  - Students must immediately follow the invigilator's order to stop writing at the end of the examination time and must not alter an Examination Booklet, Response Booklet or Answer Sheet after the invigilator has asked students to hand in examination papers.
  - Students must not remove any piece of the examination materials from the examination room, including work pages.
4. The use of inappropriate language or content may result in a mark of zero being awarded.
5. Upon completion of the examination, return all examination materials to the supervising invigilator.